



LUGG 
CUTLERY



Lugga to add value to presentations...

With its excellent workmanship, Lugga cutlery series bring the sparkle of 304 quality, 18/10 Cr-Ni stainless steel to the graceful tables.

index

| | | | |
|--------------|-----------|---------------|-----------|
| Ece | 5 | Damla | 29 |
| Elif | 7 | Ceyda | 31 |
| Nisan | 9 | Nida | 31 |
| Maya | 13 | Duru | 33 |
| Mira1 | 5 | Buse | 35 |
| Sima | 17 | Sara | 37 |
| Esmâ | 19 | Sıla | 39 |
| Defne | 23 | Hilal | 41 |
| Beren | 21 | Eda | 43 |
| Doga | 23 | Ada | 45 |
| | | Sultan | 47 |





Ece



| | |
|----------------------|--------------|
| <i>Table Fork</i> | 208 / 4 mm |
| <i>Table Spoon</i> | 212 / 4 mm |
| <i>Table Knife</i> | 230 / 10 mm |
| <i>Dessert Fork</i> | 177 / 2,5 mm |
| <i>Dessert Spoon</i> | 176 / 2,5 mm |
| <i>Dessert Knife</i> | 195 / 10 mm |
| <i>Coffee Spoon</i> | 145 / 2 mm |
| <i>Mocca Spoon</i> | 117 / 2 mm |

Titanium Finishing



Gold



Bronze



Anthracite

ECE



Elif



| | |
|----------------------|--------------|
| <i>Table Fork</i> | 215 / 4 mm |
| <i>Table Spoon</i> | 213 / 4 mm |
| <i>Table Knife</i> | 221 / 10 mm |
| <i>Dessert Fork</i> | 182 / 2,5 mm |
| <i>Dessert Spoon</i> | 182 / 2,5 mm |
| <i>Dessert Knife</i> | 185 / 10 mm |
| <i>Mocca Spoon</i> | 112 / 2 mm |

ELIF



Gold Finishing



Nisan



| | |
|----------------------|---------------------|
| <i>Table Fork</i> | <i>215 / 4 mm</i> |
| <i>Table Spoon</i> | <i>213 / 4 mm</i> |
| <i>Table Knife</i> | <i>221 / 10 mm</i> |
| <i>Dessert Fork</i> | <i>182 / 2,5 mm</i> |
| <i>Dessert Spoon</i> | <i>182 / 2,5 mm</i> |
| <i>Dessert Knife</i> | <i>218 / 10 mm</i> |
| <i>Mocca Spoon</i> | <i>117 / 2 mm</i> |

NISAN







Maya



| | |
|-------------------------|--------------|
| <i>Table Fork</i> | 212 / 3 mm |
| <i>Table Spoon</i> | 212 / 3 mm |
| <i>Table Knife</i> | 248 / 10 mm |
| <i>Dessert Fork</i> | 172 / 2,5 mm |
| <i>Dessert Spoon</i> | 169 / 2,5 mm |
| <i>Dessert Knife</i> | 222 / 10 mm |
| <i>Coffee/Tea Spoon</i> | 145 / 2 mm |
| <i>Mocca Spoon</i> | 116 / 2 mm |

MAYA



Gold Finishing



Mira



| | |
|--------------------------|--------------|
| <i>Table Fork</i> | 212 / 3 mm |
| <i>Table Spoon</i> | 212 / 3 mm |
| <i>Table Knife</i> | 248 / 10 mm |
| <i>Appetizer Fork</i> | 187 / 2,5 mm |
| <i>Appetizer Spoon</i> | 192 / 2,5 mm |
| <i>Appetizer Knife</i> | 230 / 10 mm |
| <i>Dessert Fork</i> | 177 / 2,5 mm |
| <i>Dessert Spoon</i> | 176 / 2,5 mm |
| <i>Dessert Knife</i> | 195 / 10 mm |
| <i>Coffee /Tea Spoon</i> | 155 / 2 mm |
| <i>Ice Cream Spoon</i> | 145 / 2,5 mm |
| <i>Mocca Spoon</i> | 117 / 2 mm |
| <i>Fish Fork</i> | 188 / 2,5 mm |
| <i>Fish Knife</i> | 212 / 2,5 mm |

MIRA



Gold Finishing



Sima



| | |
|--------------------------|--------------|
| <i>Table Fork</i> | 208 / 3 mm |
| <i>Table Spoon</i> | 208 / 3 mm |
| <i>Table Knife</i> | 235 / 10 mm |
| <i>Appetizer Fork</i> | 187 / 2,5 mm |
| <i>Appetizer Spoon</i> | 187 / 2,5 mm |
| <i>Appetizer Knife</i> | 230 / 10 mm |
| <i>Dessert Fork</i> | 177 / 2,5 mm |
| <i>Dessert Spoon</i> | 173 / 2,5 mm |
| <i>Dessert Knife</i> | 203 / 10 mm |
| <i>Coffee /Tea Spoon</i> | 146 / 2 mm |
| <i>Ice Cream Spoon</i> | 156 / 2,5 mm |
| <i>Mocca Spoon</i> | 117 / 2 mm |
| <i>Fish Fork</i> | 188 / 2,5 mm |
| <i>Fish Knife</i> | 212 / 2,5 mm |



Esma



| | |
|--------------------------|--------------|
| <i>Table Fork</i> | 208 / 3 mm |
| <i>Table Spoon</i> | 208 / 3 mm |
| <i>Table Knife</i> | 235 / 10 mm |
| <i>Appetizer Fork</i> | 187 / 2,5 mm |
| <i>Appetizer Spoon</i> | 187 / 2,5 mm |
| <i>Appetizer Knife</i> | 225 / 10 mm |
| <i>Dessert Fork</i> | 177 / 2,5 mm |
| <i>Dessert Spoon</i> | 173 / 2,5 mm |
| <i>Dessert Knife</i> | 200 / 10 mm |
| <i>Coffee /Tea Spoon</i> | 143 / 2 mm |
| <i>Ice Cream Spoon</i> | 155 / 2,5 mm |
| <i>Mocca Spoon</i> | 117 / 2 mm |
| <i>Fish Fork</i> | 186 / 2,5 mm |
| <i>Fish Knife</i> | 211 / 2,5 mm |

ESMA







Defne



| | |
|----------------------|--------------|
| <i>Table Fork</i> | 206 / 3 mm |
| <i>Table Spoon</i> | 205 / 3 mm |
| <i>Table Knife</i> | 223 / 10 mm |
| <i>Dessert Fork</i> | 169 / 2,5 mm |
| <i>Dessert Spoon</i> | 166 / 2,5 mm |
| <i>Dessert Knife</i> | 193 / 10 mm |
| <i>Mocca Spoon</i> | 110 / 2 mm |

DEFNE



Beren



| | |
|----------------------|--------------|
| <i>Table Fork</i> | 207 / 3 mm |
| <i>Table Spoon</i> | 205 / 3 mm |
| <i>Table Knife</i> | 232 / 10 mm |
| <i>Dessert Fork</i> | 167 / 2,5 mm |
| <i>Dessert Spoon</i> | 163 / 2,5 mm |
| <i>Dessert Knife</i> | 202 / 10 mm |
| <i>Mocca Spoon</i> | 111 / 2 mm |

BEREN



Doğa



| | |
|--------------------------|--------------|
| <i>Table Fork</i> | 206 / 3 mm |
| <i>Table Spoon</i> | 207 / 3 mm |
| <i>Table Knife</i> | 217 / 10 mm |
| <i>Appetizer Fork</i> | 195 / 2,5 mm |
| <i>Appetizer Spoon</i> | 191 / 2,5 mm |
| <i>Appetizer Knife</i> | 204 / 10 mm |
| <i>Dessert Fork</i> | 166 / 2,5 mm |
| <i>Dessert Spoon</i> | 164 / 2,5 mm |
| <i>Dessert Knife</i> | 190 / 10 mm |
| <i>Coffee /Tea Spoon</i> | 135 / 2 mm |
| <i>Ice Cream Spoon</i> | 155 / 2,5 mm |
| <i>Mocca Spoon</i> | 103 / 2 mm |
| <i>Fish Fork</i> | 205 / 2,5 mm |
| <i>Fish Knife</i> | 220 / 2,5 mm |
| 5 pcs Service Set | |

Titanium Finishing



Gold



Bronze



Anthracite

DOĞA



Damla



| | |
|----------------------|--------------|
| <i>Table Fork</i> | 202 / 3 mm |
| <i>Table Spoon</i> | 205 / 3 mm |
| <i>Table Knife</i> | 221 / 10 mm |
| <i>Dessert Fork</i> | 175 / 2,5 mm |
| <i>Dessert Spoon</i> | 175 / 2,5 mm |
| <i>Dessert Knife</i> | 192 / 10 mm |
| <i>Mocca Spoon</i> | 135 / 2 mm |

Titanium Finishing



Gold



Bronze



Anthracite

DAMLA



Ceyda



| | |
|--------------------------|--------------|
| <i>Table Fork</i> | 207 / 3 mm |
| <i>Table Spoon</i> | 208 / 3 mm |
| <i>Table Knife</i> | 209 / 10 mm |
| <i>Appetizer Fork</i> | 201 / 2,5 mm |
| <i>Appetizer Spoon</i> | 198 / 2,5 mm |
| <i>Appetizer Knife</i> | 202 / 10 mm |
| <i>Dessert Fork</i> | 162 / 2,5 mm |
| <i>Dessert Spoon</i> | 162 / 2,5 mm |
| <i>Dessert Knife</i> | 196 / 10 mm |
| <i>Coffee /Tea Spoon</i> | 140 / 2 mm |
| <i>Ice Cream Spoon</i> | 154 / 2,5 mm |
| <i>Mocca Spoon</i> | 113 / 2 mm |
| <i>Fish Fork</i> | 193 / 2,5 mm |
| <i>Fish Knife</i> | 222 / 2,5 mm |
| 5 pcs Service Set | |

Titanium Finishing



Gold



Bronze



Anthracite



Nida



| | |
|--------------------------|--------------|
| <i>Table Fork</i> | 202 / 3 mm |
| <i>Table Spoon</i> | 200 / 3 mm |
| <i>Table Knife</i> | 226 / 10 mm |
| <i>Appetizer Fork</i> | 193 / 2,5 mm |
| <i>Appetizer Spoon</i> | 191 / 2,5 mm |
| <i>Appetizer Knife</i> | 216 / 10 mm |
| <i>Dessert Fork</i> | 163 / 2,5 mm |
| <i>Dessert Spoon</i> | 162 / 2,5 mm |
| <i>Dessert Knife</i> | 192 / 10 mm |
| <i>Coffee /Tea Spoon</i> | 133 / 2 mm |
| <i>Ice Cream Spoon</i> | 153 / 2,5 mm |
| <i>Mocca Spoon</i> | 112 / 2 mm |
| <i>Fish Fork</i> | 190 / 2,5 mm |
| <i>Fish Knife</i> | 216 / 2,5 mm |

NIDA







Duru



| | |
|----------------------|--------------|
| <i>Table Fork</i> | 206 / 4 mm |
| <i>Table Spoon</i> | 205 / 4 mm |
| <i>Table Knife</i> | 223 / 10 mm |
| <i>Dessert Fork</i> | 169 / 2,5 mm |
| <i>Dessert Spoon</i> | 166 / 2,5 mm |
| <i>Dessert Knife</i> | 193 / 10 mm |
| <i>Mocca Spoon</i> | 110 / 2 mm |

DURU



Gold Finishing



Buse



| | |
|----------------------|--------------|
| <i>Table Fork</i> | 206 / 3 mm |
| <i>Table Spoon</i> | 207 / 3 mm |
| <i>Table Knife</i> | 219 / 10 mm |
| <i>Dessert Fork</i> | 164 / 2,5 mm |
| <i>Dessert Spoon</i> | 163 / 2,5 mm |
| <i>Dessert Knife</i> | 196 / 10 mm |
| <i>Mocca Spoon</i> | 113 / 2 mm |

BUSE



Sara



| | |
|----------------------|--------------|
| <i>Table Fork</i> | 206 / 3 mm |
| <i>Table Spoon</i> | 205 / 3 mm |
| <i>Table Knife</i> | 223 / 10 mm |
| <i>Dessert Fork</i> | 163 / 2,5 mm |
| <i>Dessert Spoon</i> | 163 / 2,5 mm |
| <i>Dessert Knife</i> | 196 / 10 mm |
| <i>Mocca Spoon</i> | 113 / 2 mm |

SARA



Gold Finishing



Sila



| | |
|----------------------|--------------|
| <i>Table Fork</i> | 205 / 3 mm |
| <i>Table Spoon</i> | 207 / 3 mm |
| <i>Table Knife</i> | 219 / 10 mm |
| <i>Dessert Fork</i> | 164 / 2,5 mm |
| <i>Dessert Spoon</i> | 163 / 2,5 mm |
| <i>Dessert Knife</i> | 196 / 10 mm |
| <i>Mocca Spoon</i> | 113 / 2 mm |

SILA



Gold Finishing



Hilal



| | |
|----------------------|--------------|
| <i>Table Fork</i> | 202 / 2,5 mm |
| <i>Table Spoon</i> | 200 / 2,5 mm |
| <i>Table Knife</i> | 226 / 10 mm |
| <i>Dessert Fork</i> | 163 / 2 mm |
| <i>Dessert Spoon</i> | 162 / 2 mm |
| <i>Dessert Knife</i> | 192 / 10 mm |
| <i>Mocca Spoon</i> | 112 / 2 mm |

HILAL



Eda



| | |
|--------------------------|--------------|
| <i>Table Fork</i> | 193 / 2,5 mm |
| <i>Table Spoon</i> | 195 / 2,5 mm |
| <i>Table Knife</i> | 213 / 10 mm |
| <i>Appetizer Fork</i> | 182 / 2 mm |
| <i>Appetizer Spoon</i> | 184 / 2 mm |
| <i>Appetizer Knife</i> | 199 / 10 mm |
| <i>Dessert Fork</i> | 155 / 2 mm |
| <i>Dessert Spoon</i> | 155 / 2 mm |
| <i>Dessert Knife</i> | 184 / 10 mm |
| <i>Coffee /Tea Spoon</i> | 129 / 2 mm |
| <i>Ice Cream Spoon</i> | 129 / 2 mm |
| <i>Mocca Spoon</i> | 112 / 2 mm |
| <i>Fish Fork</i> | 180 / 2 mm |
| <i>Fish Knife</i> | 207 / 2 mm |



Ada



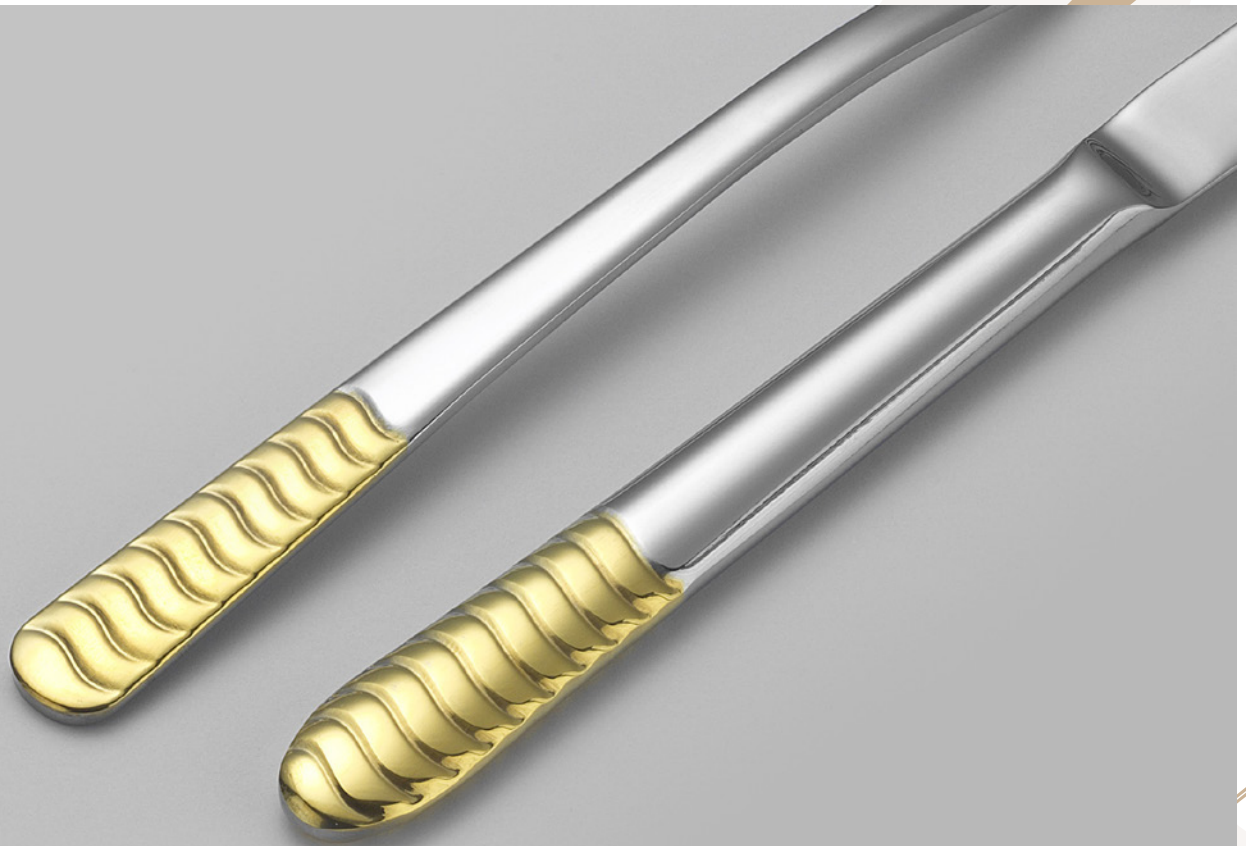
| | |
|--------------------------|--------------|
| <i>Table Fork</i> | 193 / 2,5 mm |
| <i>Table Spoon</i> | 195 / 2,5 mm |
| <i>Table Knife</i> | 213 / 10 mm |
| <i>Dessert Fork</i> | 155 / 2 mm |
| <i>Dessert Spoon</i> | 155 / 2, mm |
| <i>Dessert Knife</i> | 184 / 10 mm |
| <i>Coffee /Tea Spoon</i> | 129 / 2 mm |
| <i>Ice Cream Spoon</i> | 129 / 2 mm |
| <i>Mocca Spoon</i> | 112 / 1,5 mm |

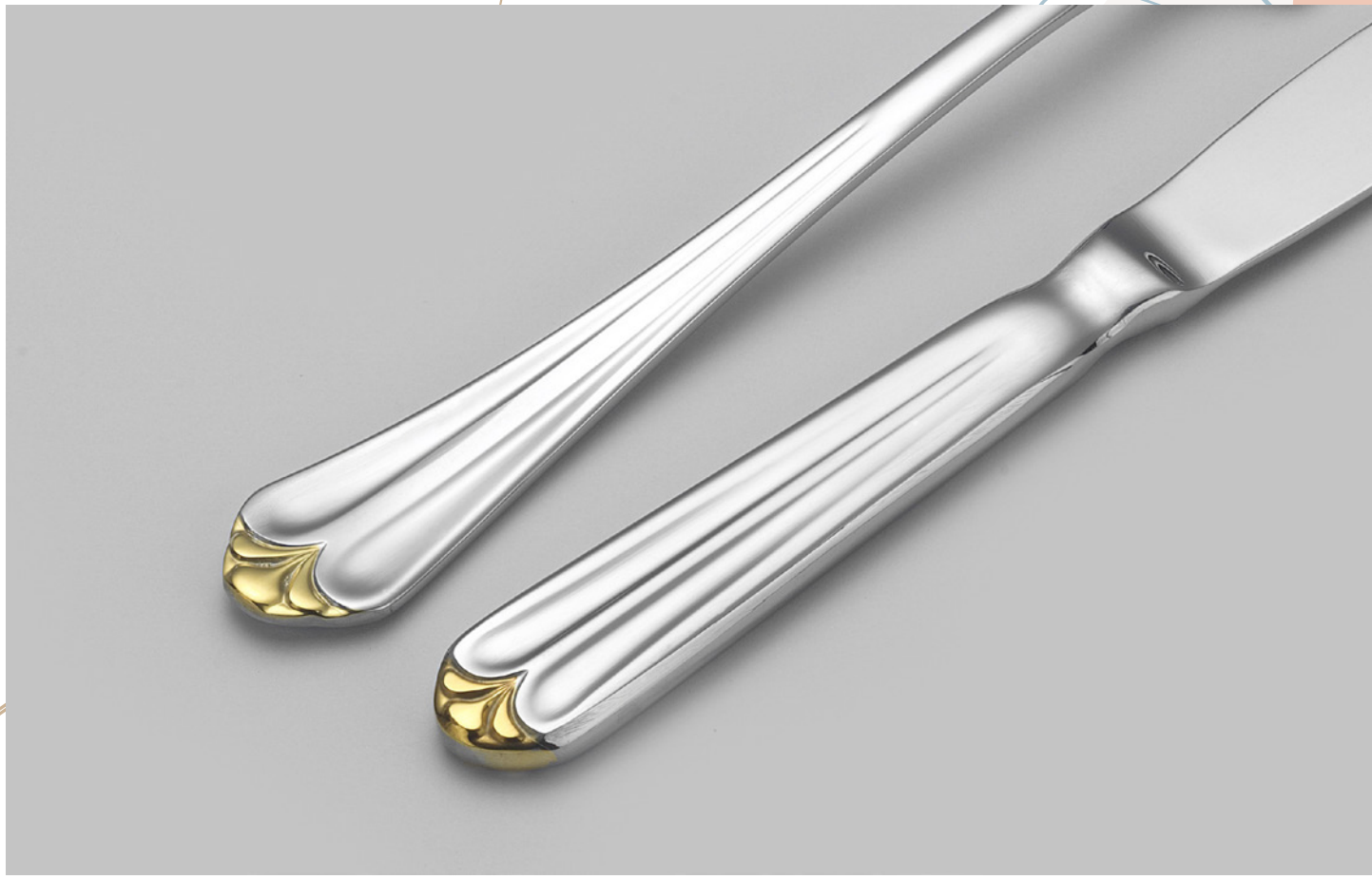


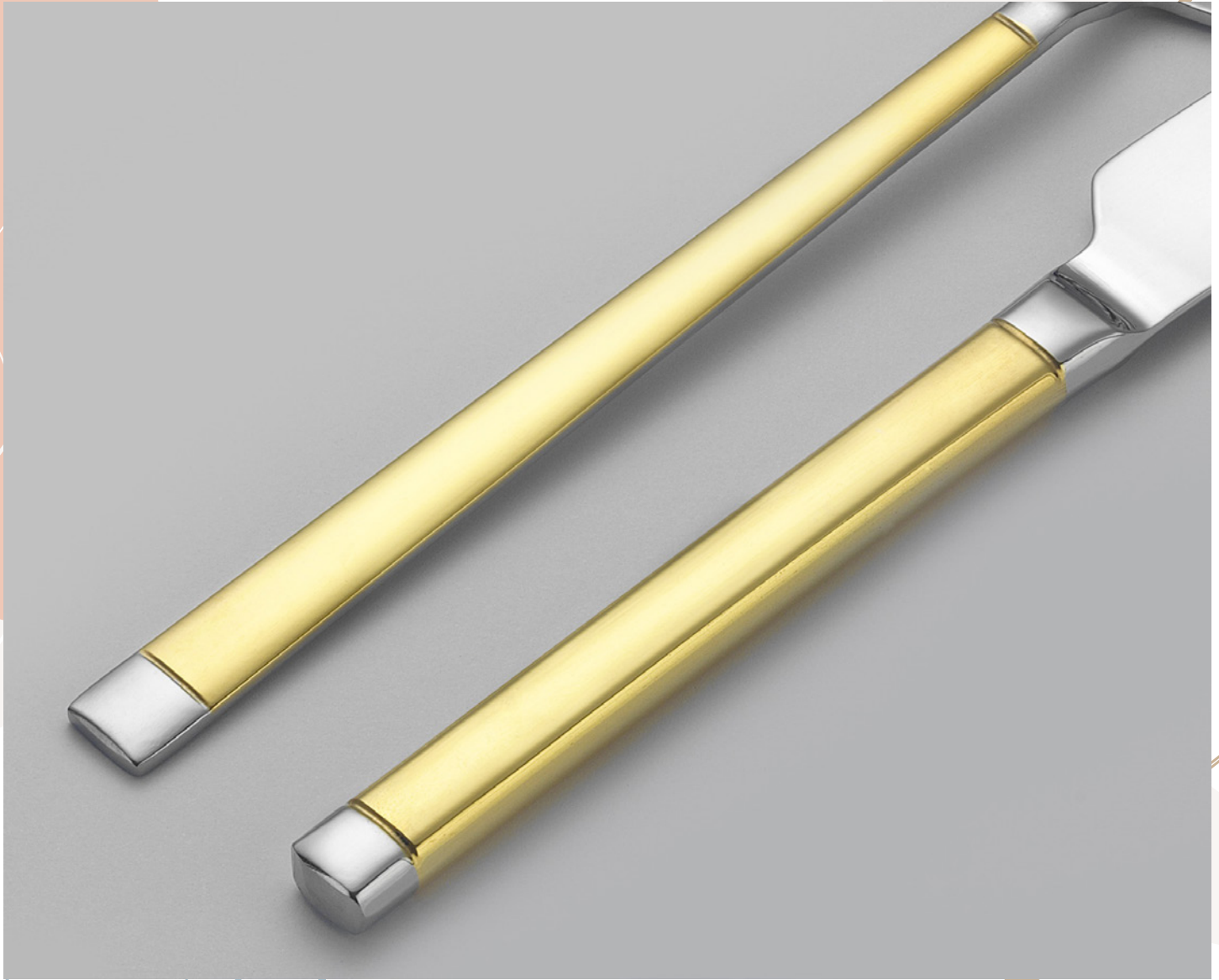
Sultan

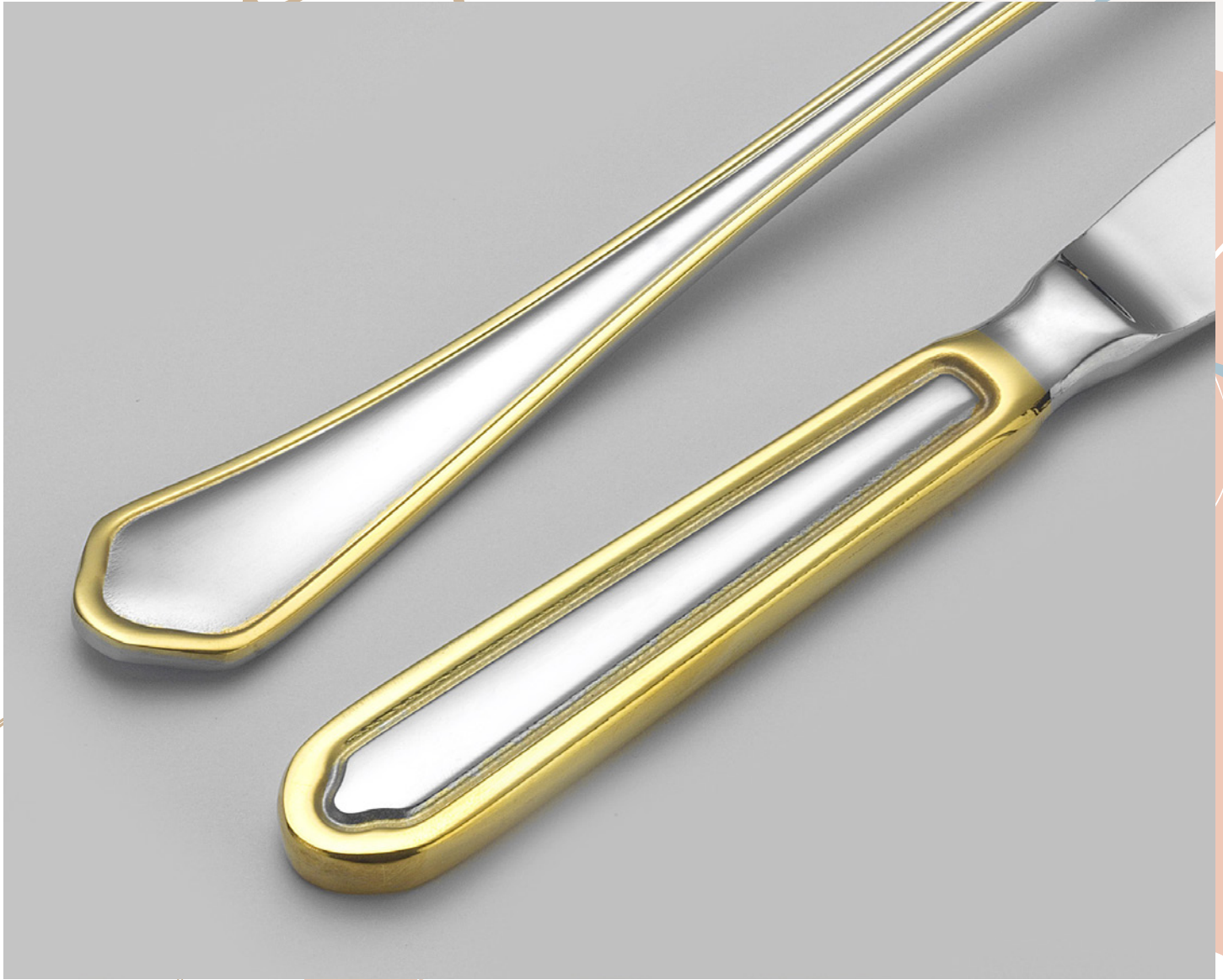


| | |
|----------------------|--------------|
| <i>Table Fork</i> | 196 / 2 mm |
| <i>Table Spoon</i> | 195 / 2 mm |
| <i>Table Knife</i> | 213 / 2,5 mm |
| <i>Dessert Fork</i> | 155 / 1,5 mm |
| <i>Dessert Spoon</i> | 155 / 1,5 mm |
| <i>Dessert Knife</i> | 184 / 2,5 mm |
| <i>Mocca Spoon</i> | 112 / 2 mm |

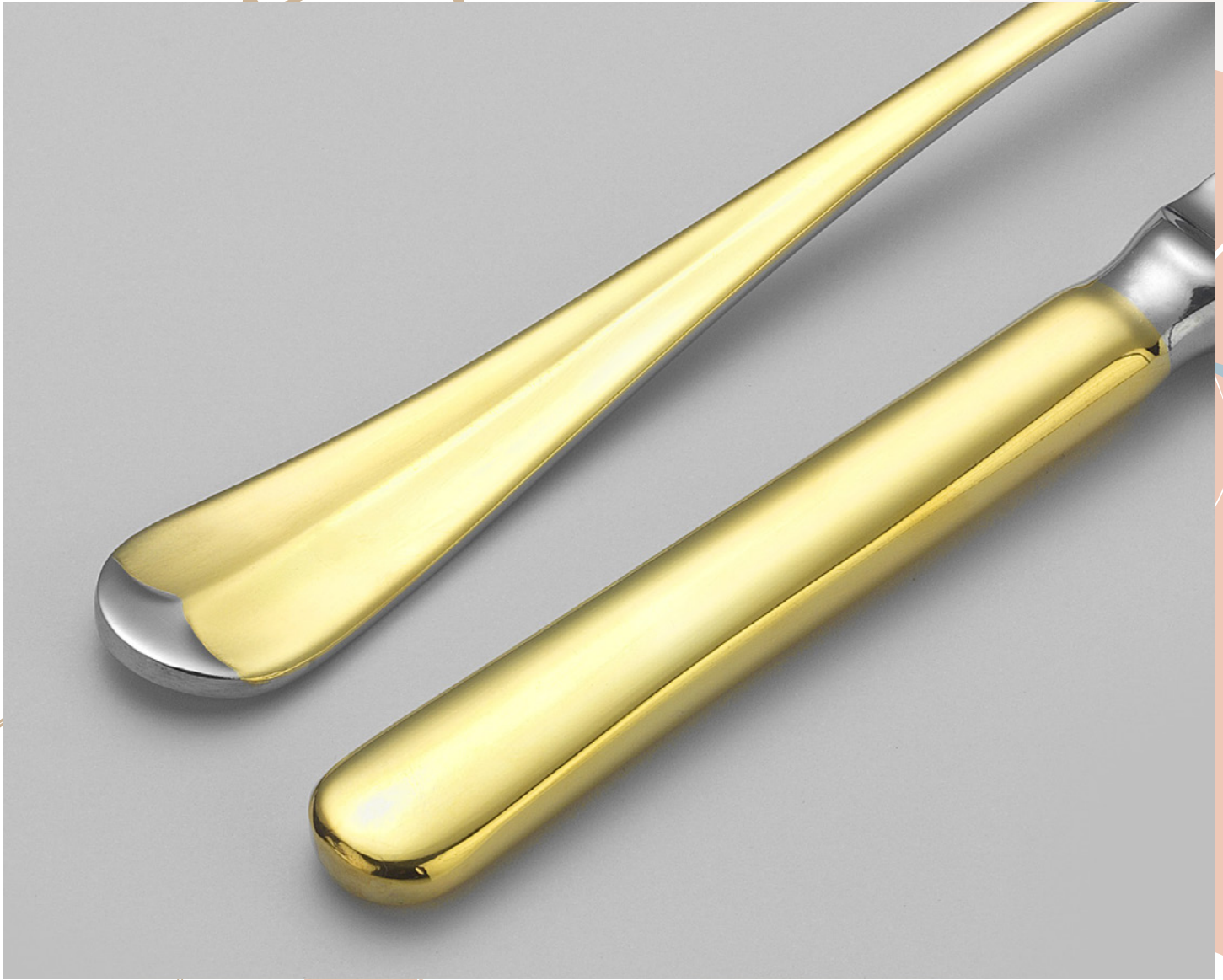


































CERTIFICATE

This is to Certify that the Quality Management System of

Lugga Çatal Kaşık Bıçakları İmalatı İthalat İhracat Pazarlama Anonim Şirketi

Yenidoğan Mah. Yeniçeri Sk. No: 18 A Bayrampaşa İstanbul Turkey

has been independently assessed and is compliant with the requirements of

ISO 9001:2015

This Certificate is applicable to the following product or service ranges:

Manufacture, Wholesale, Import and Export of Spoons, Forks, Knives and Metal Utensils, Industrial Kitchen Countertops and Kitchen Utensils, All Kinds of Sheet Metal, Aluminum, Steel Kitchen Utensils Purchase, Sale, Import and Export

Certificate No.: TR85860A

| | |
|--|--------------|
| Date of initial registration | 27 June 2019 |
| Date of this Certificate | 27 June 2019 |
| Surveillance audit on or before | 26 June 2020 |
| Recertification Due / Certificate expiry | 26 June 2022 |

This Certificate is property of LMS Certifications and remains valid subject to satisfactory surveillance audits.

Pamir

Director



LMS Certifications Private Limited
T. Anand Chinnai, Opp. to Kallal Pond Spot Gate, Pandi Nagar, Lucknow - 226015, India
Phone: +91-9526454664 | Mobile: +91-9839960011
Fax: +91-8857101005 | Email: info@lmscert.com | Web: www.lmscert.com

For updates and/or updated information concerning the present certificate, mail to: info@lmscert.com

This Certificate is the property of LMS Certification Private Limited and shall be returned immediately when demanded.

LMSPT19017REV03



CERTIFICATE

Lugga Çatal Kaşık Bıçakları İmalatı İthalat İhracat Pazarlama Anonim Şirketi

Yenidoğan Mah. Yeniçeri Sk. No: 18 A Bayrampaşa İstanbul Turkey

The above-mentioned organization implements and maintains a management system in the following scope, and its compliance with the standard has been approved by KingCert.

ISO 10002:2014 Customer Satisfaction Management System

Scope : Manufacture, Wholesale, Import and Export of Spoons, Forks, Knives and Metal Utensils, Industrial Kitchen Countertops and Kitchen Utensils, All Kinds of Sheet Metal, Aluminum, Steel Kitchen Utensils Purchase, Sale, Import and Export

This certificate is valid during above mentioned company perform the requirements of ISO 10002:2014 standard and fulfill all responsibilities to KingCert.

Certificate Publication Date : 27.06.2019
Cert. Last Issue Date : 27.06.2019
Cert. Expiry Date : 26.06.2020
Cert. Period Exp. Date : 26.06.2022
Certificate Number : W-190635



World Accreditation Services
ACCREDITED
CERTIFICATION BODIES
EN ISO/IEC 17021
(CERTIFICATION OF MANAGEMENT SYSTEMS)



KingCert International Certification D.O.O.
Banderov Brdo, Uč. ulica, Buzdovac,
Bb. 84310 Rozaje, Montenegro
info@kingcert.me
FR.25 / 01.09.2017 / - / 00

Hereby, KingCert International Certification D.O.O., certifies that the above stated company have the appropriate management system according to the requirements of the above standards. This certificate is valid for three years as long as the system effectively maintained and surveillance audits are carried out. The validity of the certificate can be checked through www.kingcert.me or www.Trustfile.us. The certificate is property of KingCert International Certification D.O.O. and shall be returned if so requested.

Center: *Yenidođan Mahallesi Yeniçeri Sokak No:16/A*
Bayrampařa – İstanbul
Tel: +90 212 544 94 58
Faks: +90 212 674 06 98
info@luggaa.com

Branch 1: *Yenidođan Mahallesi*
Yeniçeri Sokak No:18
Bayrampařa – İstanbul

Branch 2: *Yenidođan Mahallesi Kıřla Caddesi*
Hanife Ana Sokak Kervan Han No:28
Bayrampařa – İstanbul



www.luggashop.com

LUGGA 
CUTLERY

www.luggaa.com

2022